



# TWEAK Polyclonal Antibody

<b>Catalog No</b>	YP-Ab-00546
<b>Isotype</b>	IgG
<b>Reactivity</b>	Human;Mouse
<b>Applications</b>	WB;IHC;IF;ELISA
<b>Gene Name</b>	TNFSF12
<b>Protein Name</b>	Tumor necrosis factor ligand superfamily member 12
<b>Immunogen</b>	The antiserum was produced against synthesized peptide derived from human TNFSF12. AA range:41-90
<b>Specificity</b>	TWEAK Polyclonal Antibody detects endogenous levels of TWEAK protein.
<b>Formulation</b>	Liquid in PBS containing 50% glycerol, 0.5% BSA and 0.02% sodium azide.
<b>Source</b>	Polyclonal, Rabbit,IgG
<b>Purification</b>	The antibody was affinity-purified from rabbit antiserum by affinity-chromatography using epitope-specific immunogen.
<b>Dilution</b>	Western Blot: 1/500 - 1/2000. Immunohistochemistry: 1/100 - 1/300. Immunofluorescence: 1/200 - 1/1000. ELISA: 1/20000. Not yet tested in other applications.
<b>Concentration</b>	1 mg/ml
<b>Purity</b>	≥90%
<b>Storage Stability</b>	-20°C/1 year
<b>Synonyms</b>	TNFSF12; APO3L; DR3LG; Tumor necrosis factor ligand superfamily member 12; APO3 ligand; TNF-related weak inducer of apoptosis; TWEAK
<b>Observed Band</b>	27kD
<b>Cell Pathway</b>	Cell membrane ; Single-pass type II membrane protein .; [Tumor necrosis factor ligand superfamily member 12, secreted form]: Secreted.; [Isoform TWE-PRIL]: Cell membrane; Single-pass membrane protein.
<b>Tissue Specificity</b>	Highly expressed in adult heart, pancreas, skeletal muscle, brain, colon, small intestine, lung, ovary, prostate, spleen, lymph node, appendix and peripheral blood lymphocytes. Low expression in kidney, testis, liver, placenta, thymus and bone marrow. Also detected in fetal kidney, liver, lung and brain.
<b>Function</b>	function: Binds to FN14 and possibly also to TNFRSF12/APO3. Weak inducer of apoptosis in some cell types. Mediates NF-kappa-B activation. Promotes angiogenesis and the proliferation of endothelial cells. Also involved in induction of inflammatory cytokines. function: Cytokine that binds to TNFRSF13B/TAC1 and to TNFRSF17/BCMA. May be implicated in the regulation of tumor cell growth. May be involved in monocyte/macrophage-mediated immunological processes. induction: Down-regulated by phorbol myristate acetate/ionomycin treatment. PTM: The precursor is cleaved by furin. PTM: The soluble form derives from the membrane form by proteolytic processing. similarity: Belongs to the tumor necrosis factor family. subunit: Homotrimer (Potential). Interacts with the



angiogenic factor AGGF1/VG5Q.,subunit:Homotrimer .,tissue  
specificity:Expressed at high levels in transformed cell lines, cancers of colon, thy

**Background**

The protein encoded by this gene is a cytokine that belongs to the tumor necrosis factor (TNF) ligand family. This protein is a ligand for the FN14/TWEAKR receptor. This cytokine has overlapping signaling functions with TNF, but displays a much wider tissue distribution. This cytokine, which exists in both membrane-bound and secreted forms, can induce apoptosis via multiple pathways of cell death in a cell type-specific manner. This cytokine is also found to promote proliferation and migration of endothelial cells, and thus acts as a regulator of angiogenesis. Alternative splicing results in multiple transcript variants. Some transcripts skip the last exon of this gene and continue into the second exon of the neighboring TNFSF13 gene; such read-through transcripts are contained in GeneID 407977, TNFSF12-TNFSF13. [provided by RefSeq, Oct 2010],

**matters needing attention**

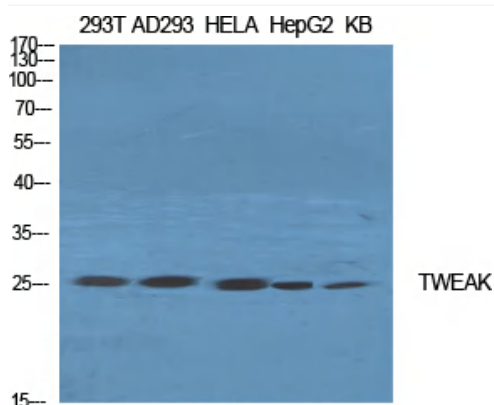
Avoid repeated freezing and thawing!

**Usage suggestions**

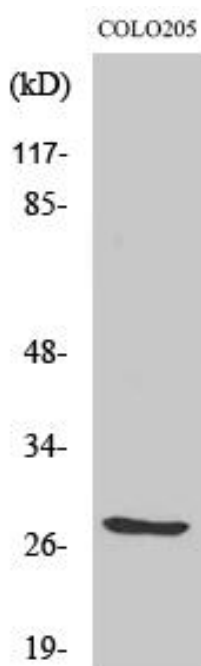
This product can be used in immunological reaction related experiments. For more information, please consult technical personnel.



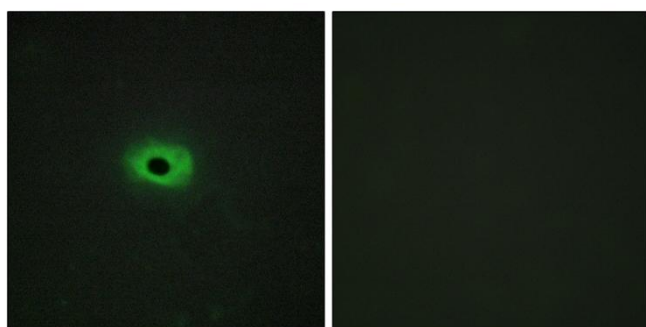
## Products Images



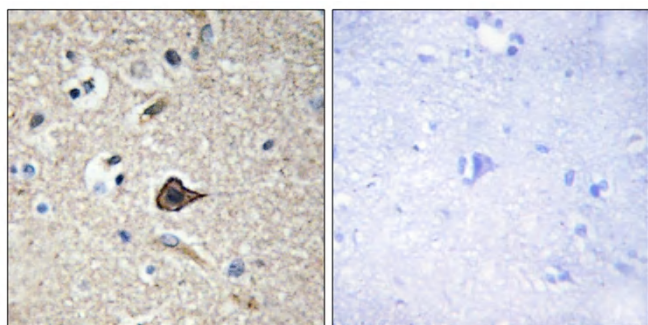
Western Blot analysis of various cells using TWEAK Polyclonal Antibody diluted at 1:2000. Secondary antibody(catalog#:RS0002) was diluted at 1:20000



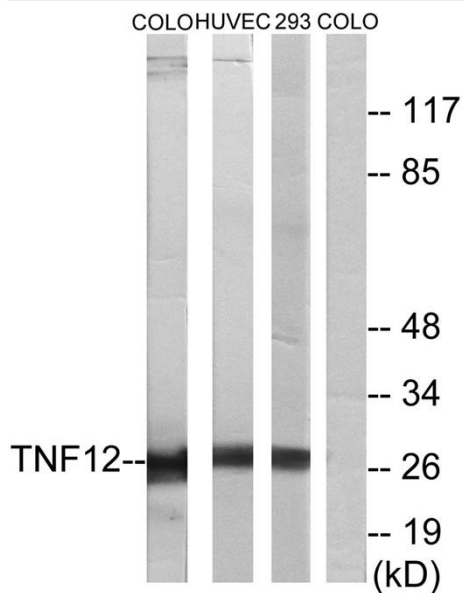
Western Blot analysis of 293 cells using TWEAK Polyclonal Antibody diluted at 1:2000. Secondary antibody(catalog#:RS0002) was diluted at 1:20000



Immunofluorescence analysis of HeLa cells, using TNF12 Antibody. The picture on the right is blocked with the synthesized peptide.



Immunohistochemistry analysis of paraffin-embedded human brain, using TNF12 Antibody. The picture on the right is blocked with the synthesized peptide.



Western blot analysis of lysates from COLO205, HUVEC cells, and 293 cells, using TNF12 Antibody. The lane on the right is blocked with the synthesized peptide.